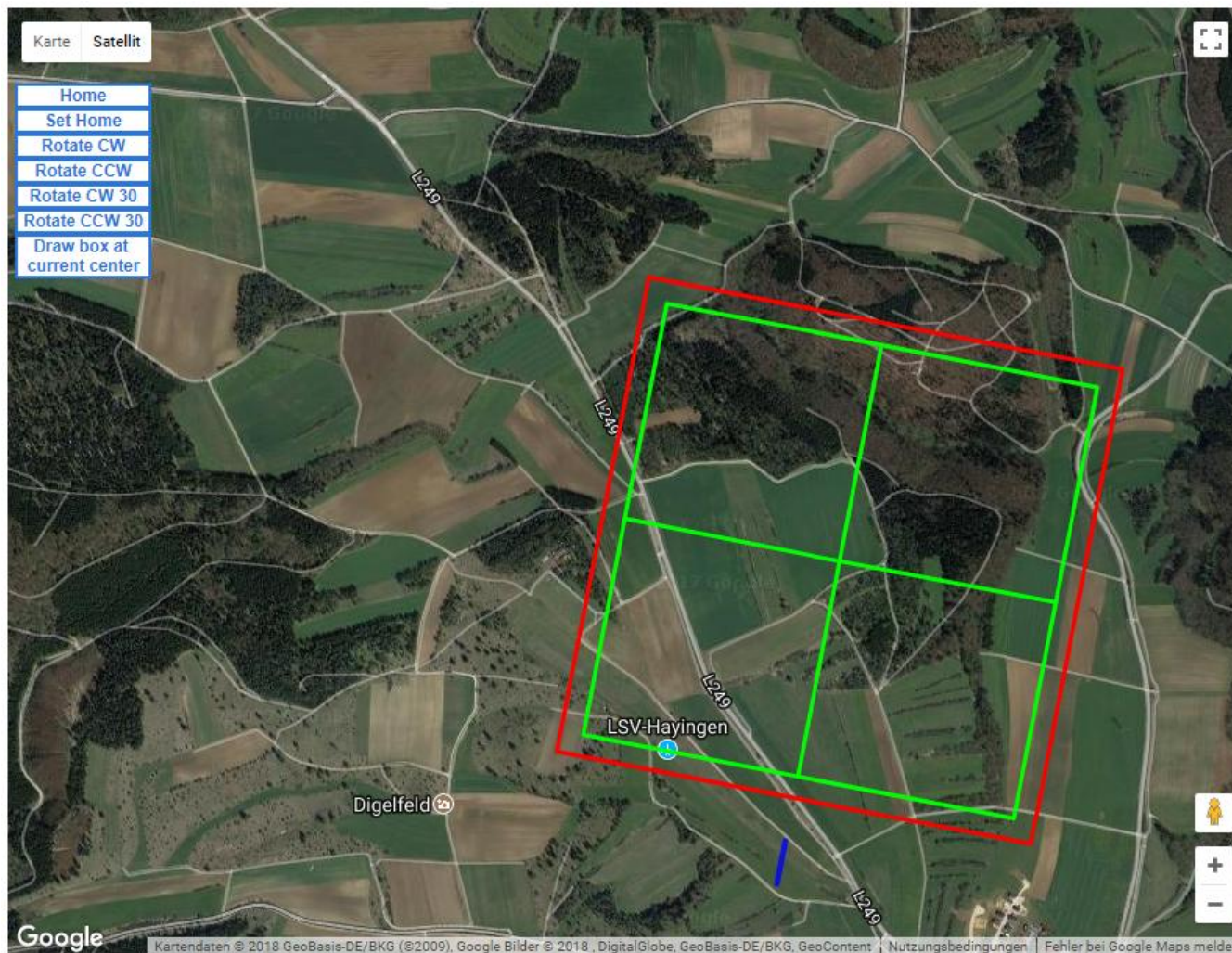


Lage der Kunstflugbox für die Deutsche Meisterschaft Segelkunstflug 2018

02.07. bis 14.07.2018



[SHOW HELP](#)
[SAVE AS FAVORITE](#)


[EMAIL THIS MAP](#)

All box and boundary locations are described relative from the Judges position.
 Written for API v2 by Gus Fraser IAC-52
 Modified for API v3 by Sergey Prolagayev IAC-52

Box Coordinates

Location	Lat	Long	
Back Left	048°17'37.35"N	009°27'56.51"E	SHOW DETAIL
Back Center	048°17'34.26"N	009°28'20.39"E	SHOW DETAIL
Back Right	048°17'31.17"N	009°28'44.28"E	SHOW DETAIL
Center Left	048°17'21.46"N	009°27'51.87"E	SHOW DETAIL
Center Box	048°17'18.37"N	009°28'15.75"E	SHOW DETAIL
Center Right	048°17'15.28"N	009°28'39.63"E	SHOW DETAIL
Front Left	048°17'05.57"N	009°27'47.23"E	SHOW DETAIL
Front Center	048°17'02.48"N	009°28'11.11"E	SHOW DETAIL
Front Right	048°16'59.39"N	009°28'34.99"E	SHOW DETAIL

Bounary Coordinates

Location	Lat	Long	
Back Left	048°17'32.45"N	009°28'47.13"E	SHOW DETAIL
Back Right	048°17'39.25"N	009°27'54.58"E	SHOW DETAIL
Front Left	048°16'57.49"N	009°28'36.91"E	SHOW DETAIL
Front Right	048°17'04.29"N	009°27'44.38"E	SHOW DETAIL

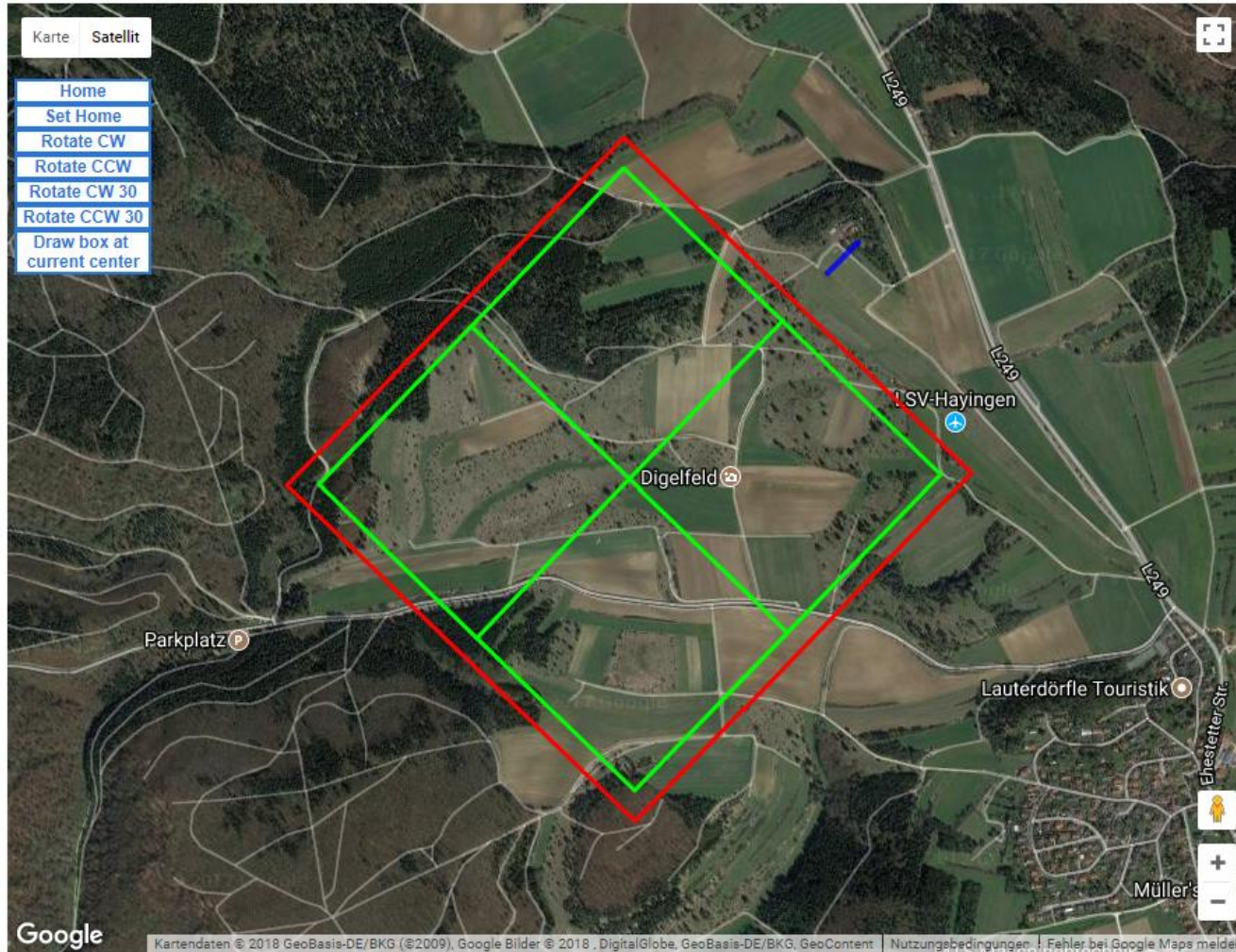
X Axis Heading	Form B	Form C
	101	281

Judges can be positioned anywhere along the blue line which runs

From	048°16'57.71"N	009°28'09.72"E	SHOW DETAIL
To	048°16'54.53"N	009°28'08.79"E	SHOW DETAIL

Lage alternativ für Freestylecup

14.07.2018



[SHOW HELP](#)
[SAVE AS FAVORITE](#)


[EMAIL THIS MAP](#)

All box and boundary locations are described relative from the Judges position.
 Written for API v2 by Gus Fraser IAC-52
 Modified for API v3 by Sergey Prolagayev IAC-52

Box Coordinates

Location	Lat	Long	
Back Left	048°16'37.38"N	009°27'21.18"E	SHOW DETAIL
Back Center	048°16'48.63"N	009°27'03.68"E	SHOW DETAIL
Back Right	048°16'59.87"N	009°26'46.18"E	SHOW DETAIL
Center Left	048°16'49.03"N	009°27'38.08"E	SHOW DETAIL
Center Box	048°17'00.27"N	009°27'20.58"E	SHOW DETAIL
Center Right	048°17'11.52"N	009°27'03.08"E	SHOW DETAIL
Front Left	048°17'00.67"N	009°27'54.98"E	SHOW DETAIL
Front Center	048°17'11.92"N	009°27'37.48"E	SHOW DETAIL
Front Right	048°17'23.16"N	009°27'19.98"E	SHOW DETAIL

Boundary Coordinates

Location	Lat	Long	
Back Left	048°16'59.83"N	009°26'42.74"E	SHOW DETAIL
Back Right	048°16'35.09"N	009°27'21.24"E	SHOW DETAIL
Front Left	048°17'25.45"N	009°27'19.92"E	SHOW DETAIL
Front Right	048°17'00.71"N	009°27'58.42"E	SHOW DETAIL

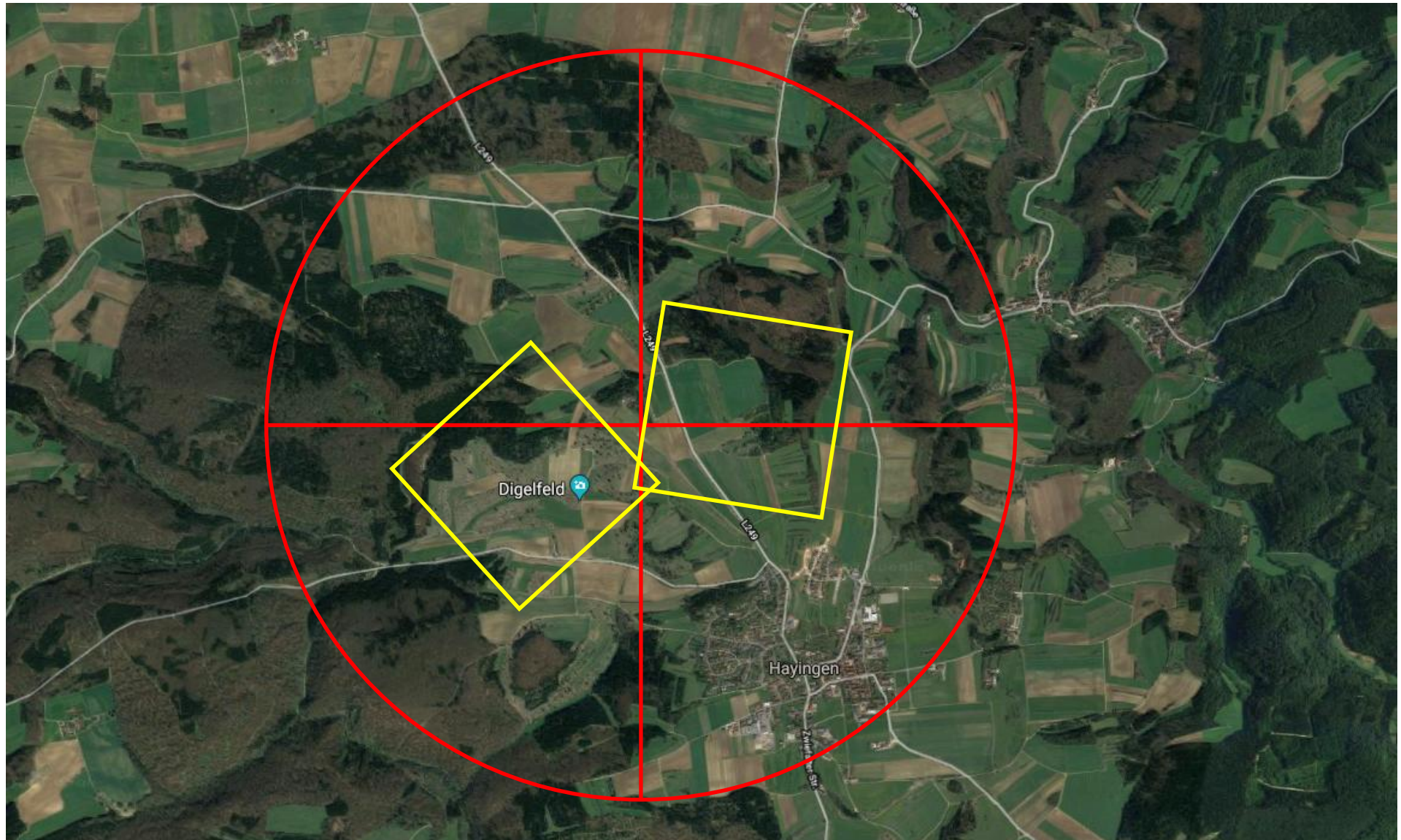
X Axis Heading	Form B	Form C
	314	134

Judges can be positioned anywhere along the blue line which runs

	From	To	
	048°17'15.41"N	009°27'42.55"E	SHOW DETAIL
	048°17'17.74"N	009°27'45.93"E	SHOW DETAIL

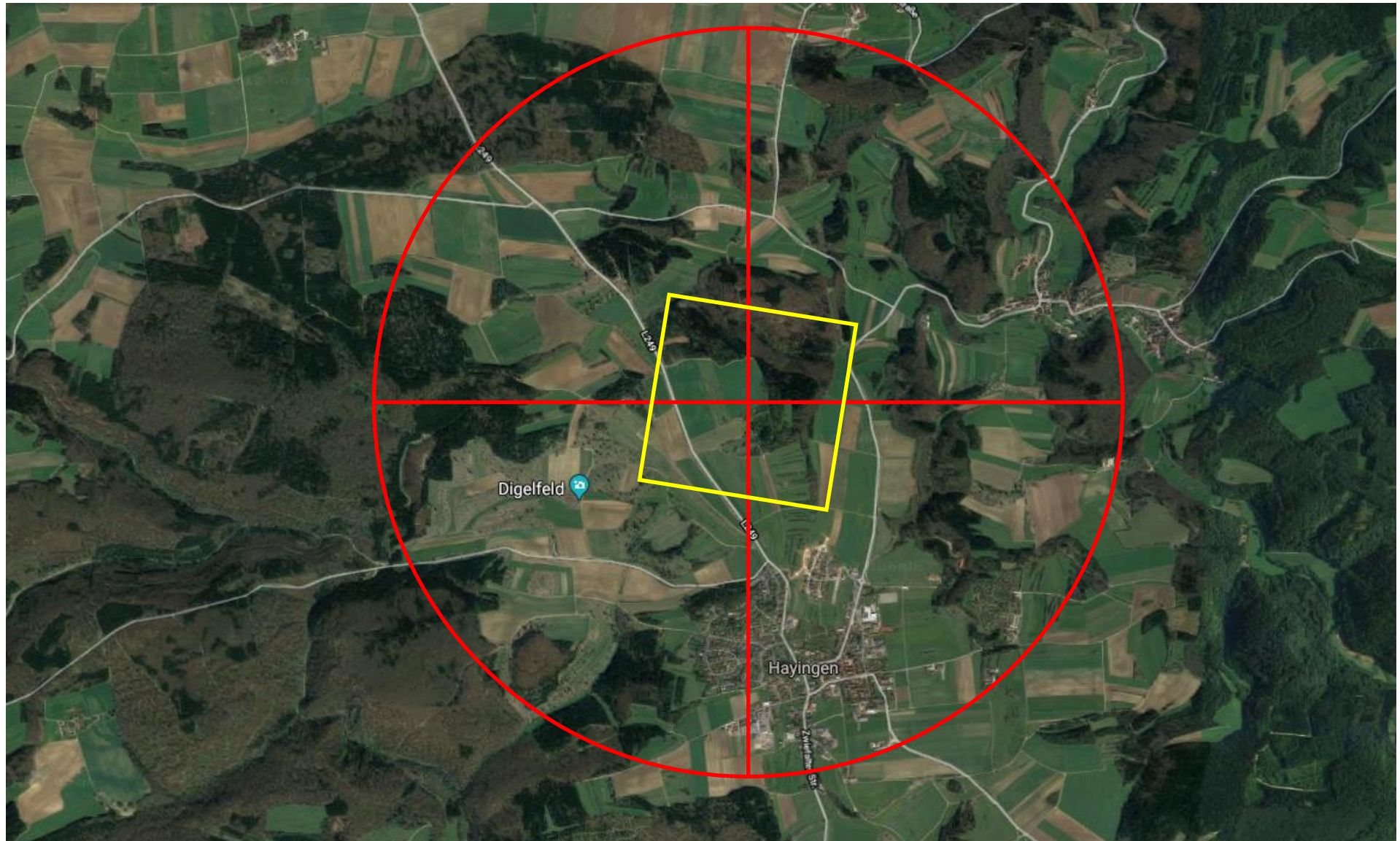
Sicherheitskreis Radius 2 NM um den Zentralmittelpunkt der Sportveranstaltung

O 048°17'14.31" N 009°27'47.38"



Sicherheitskreis Radius 2 NM um den Zentralmittelpunkt der Sportveranstaltung DSKM 2018

O 048°17'18.37" N 009°27'15.75"



Sicherheitskreis Radius 2 NM um den Zentralmittelpunkt der Sportveranstaltung Freestylecup
O 048°17'20.89" N 009°27'11.08"

